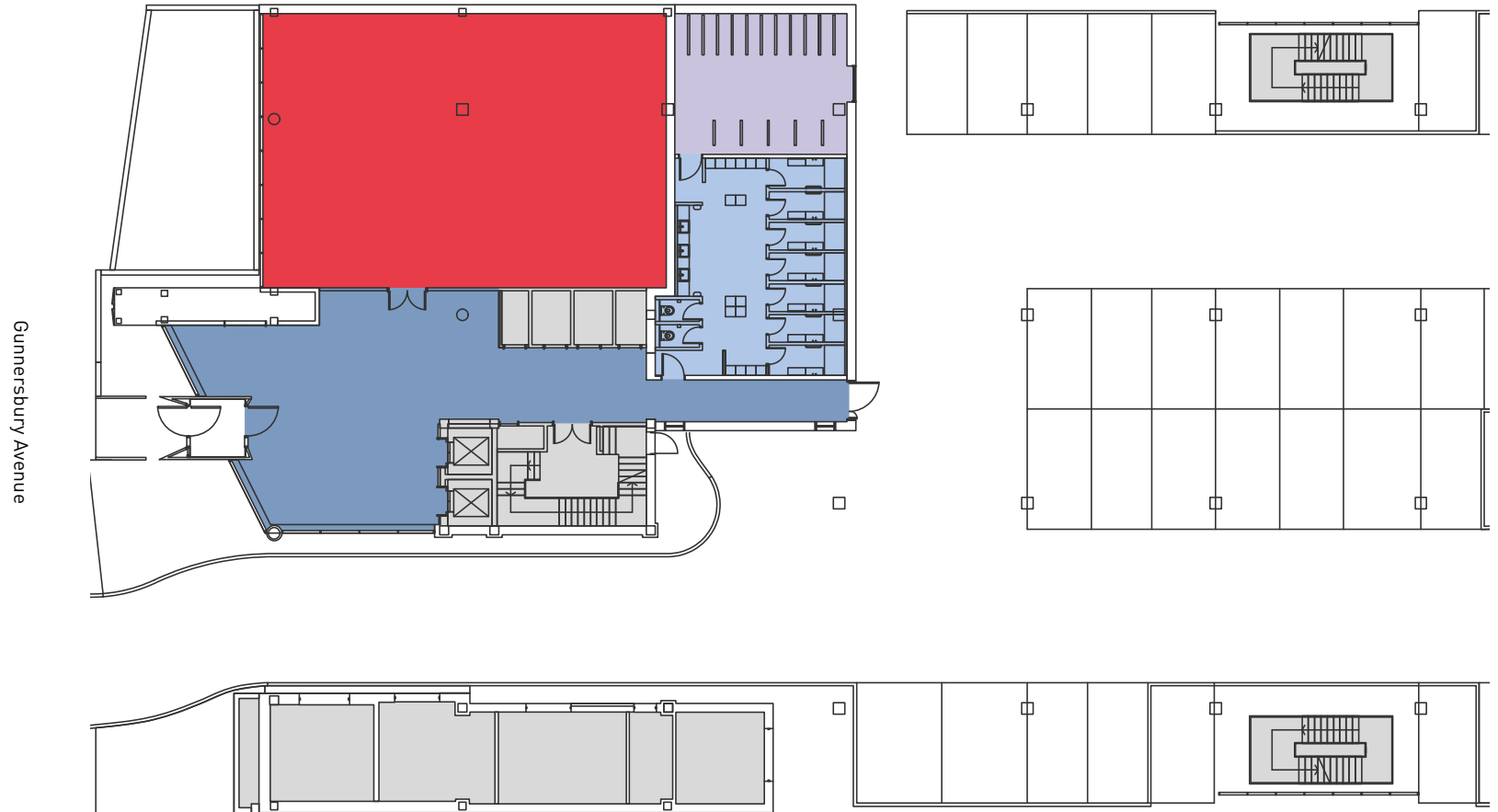


GROUND FLOOR
1,830 SQ FT / 170 SQ M



Gunnersbury Avenue

● Office ● Reception ● Showers / Changing Rooms ● Bike Store ● Core

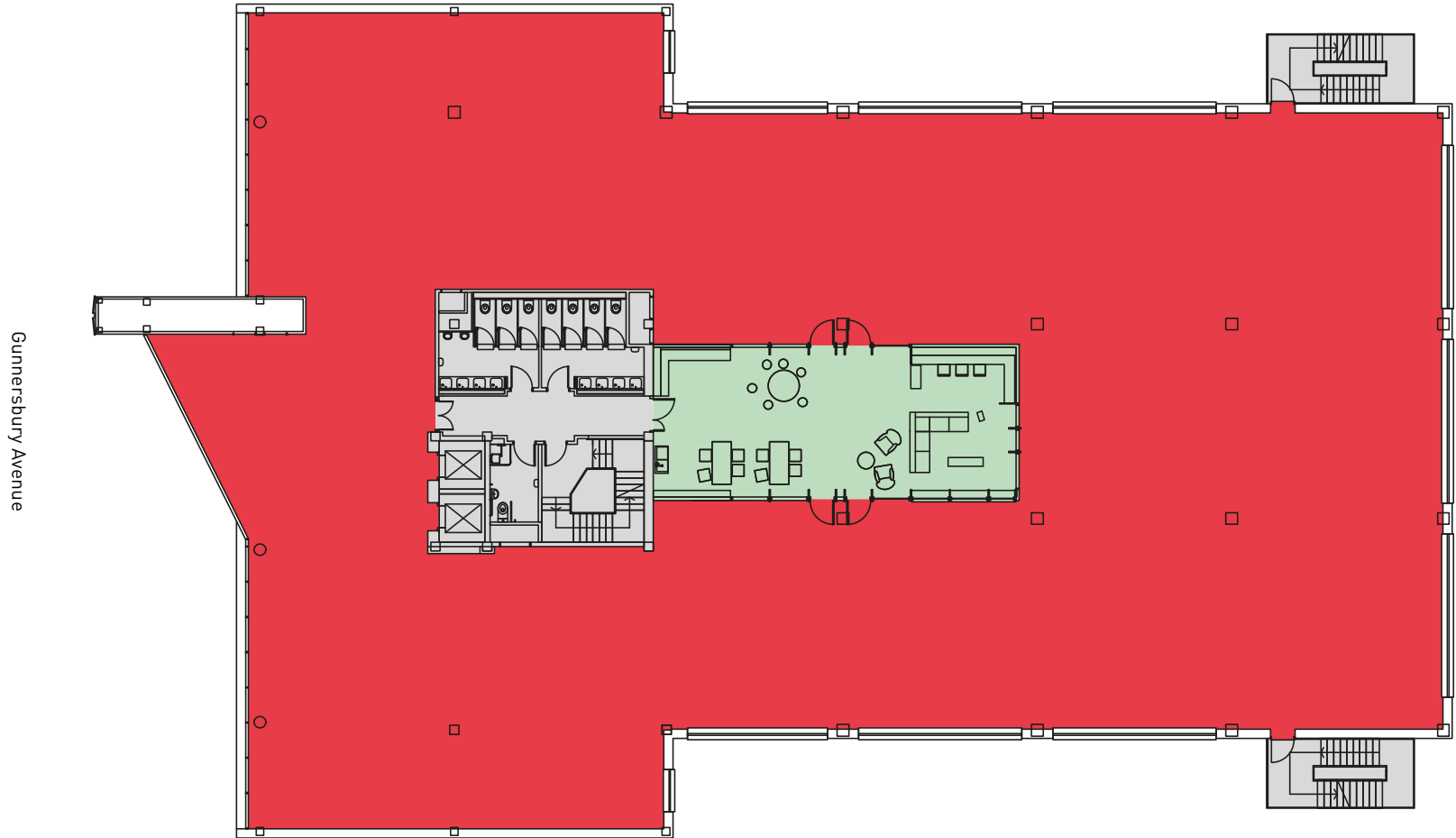
For indicative purposes only, not to scale.

272 Gunnersbury Ave
Chiswick W4 5QB

FIRST FLOOR

11,248 SQ FT / 1,045 SQ M

AVAILABLE TO SPLIT INTO FOUR SUITES FROM 2,500 SQ FT



● Office ● Atrium ● Core

For indicative purposes only, not to scale.

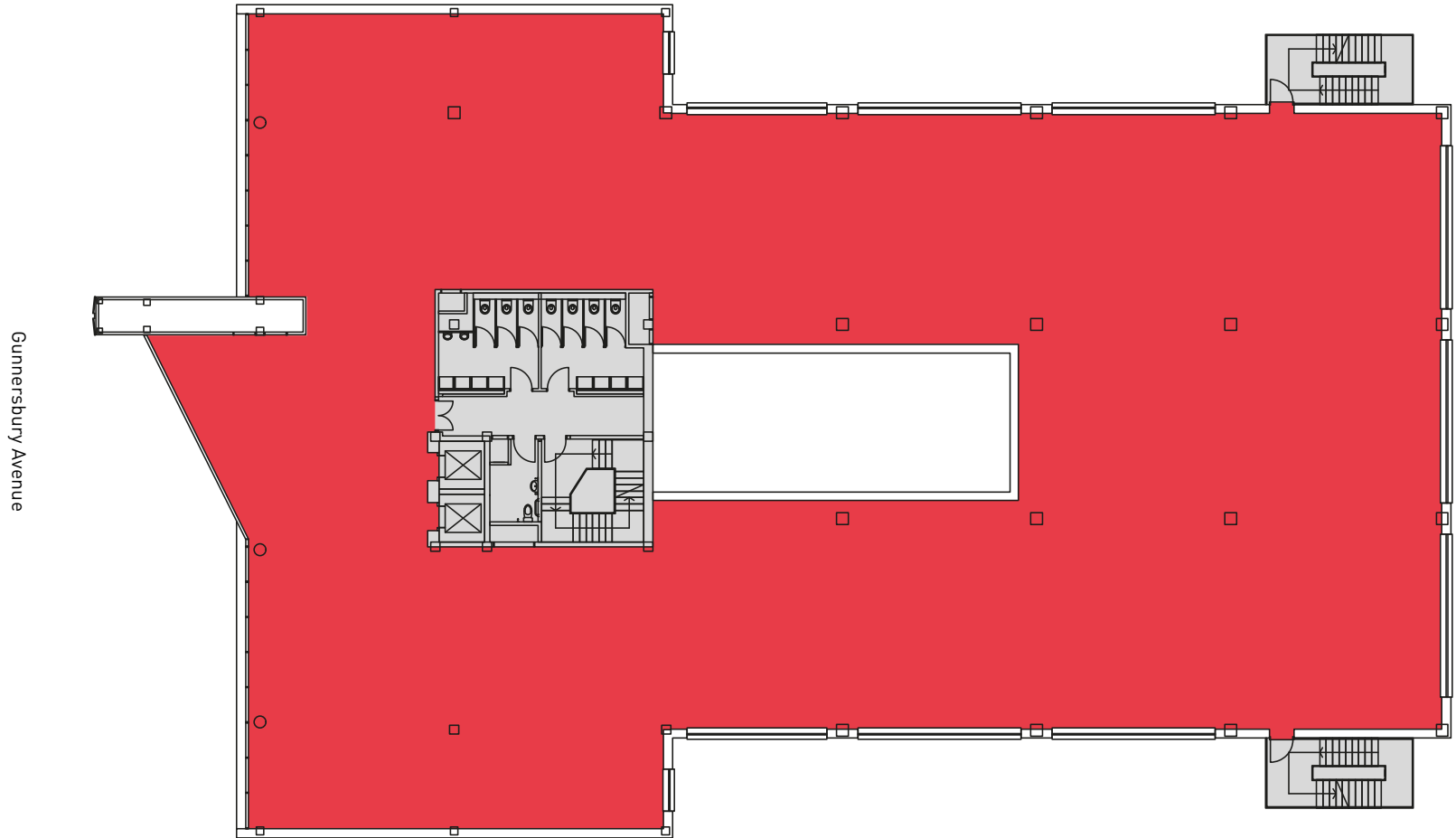
272

272 Gunnersbury Ave
Chiswick W4 5QB

SECOND FLOOR

11,464 SQ FT / 1,065 SQ M

AVAILABLE TO SPLIT INTO TWO SUITES OF 5,436 SQ FT AND 5,834 SQ FT



Gunnersbury Avenue

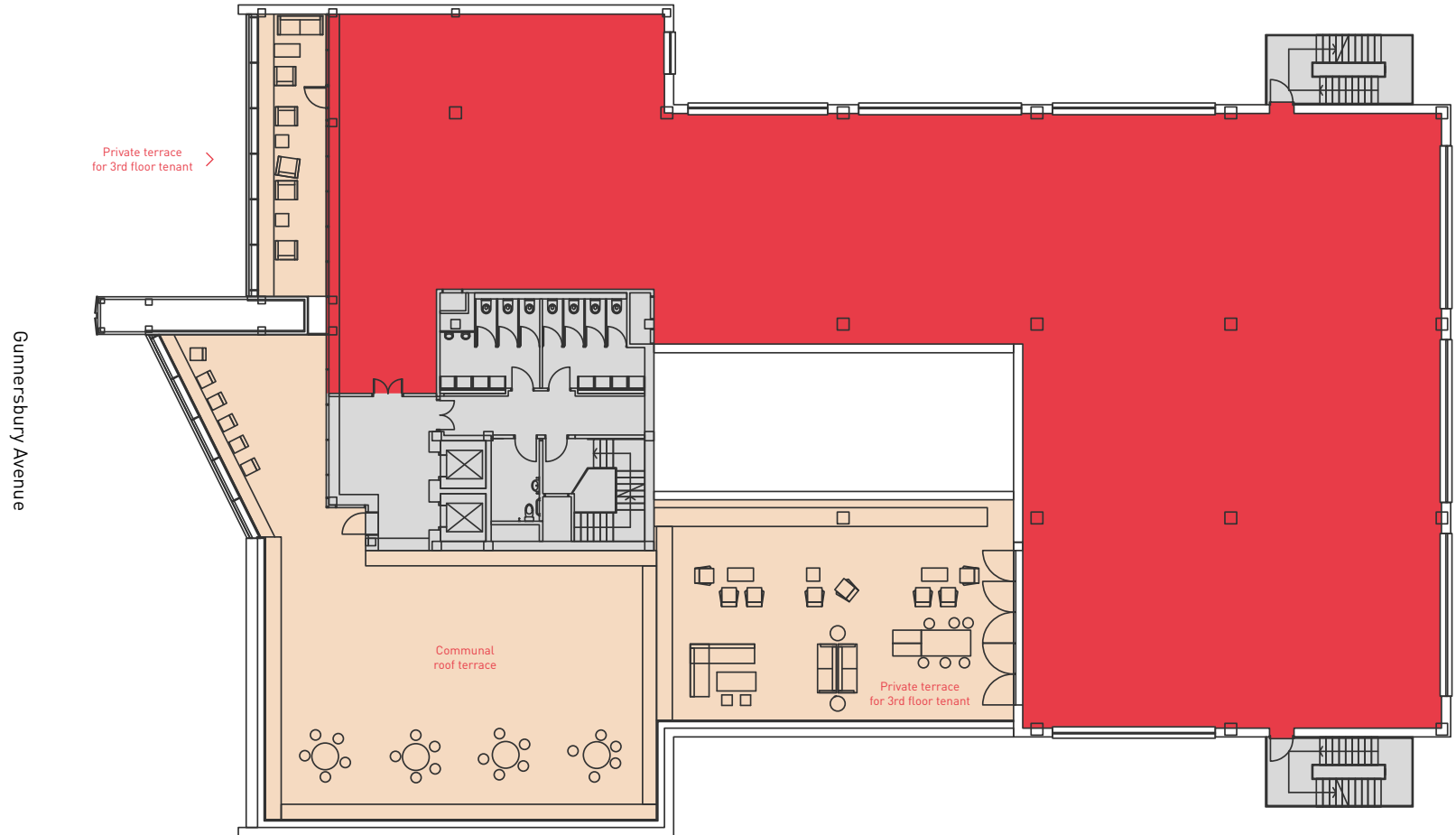
● Office ● Core

For indicative purposes only, not to scale.

272

THIRD FLOOR

7,298 SQ FT / 678 SQ M



272

● Office ● Terrace ● Core

For indicative purposes only, not to scale.