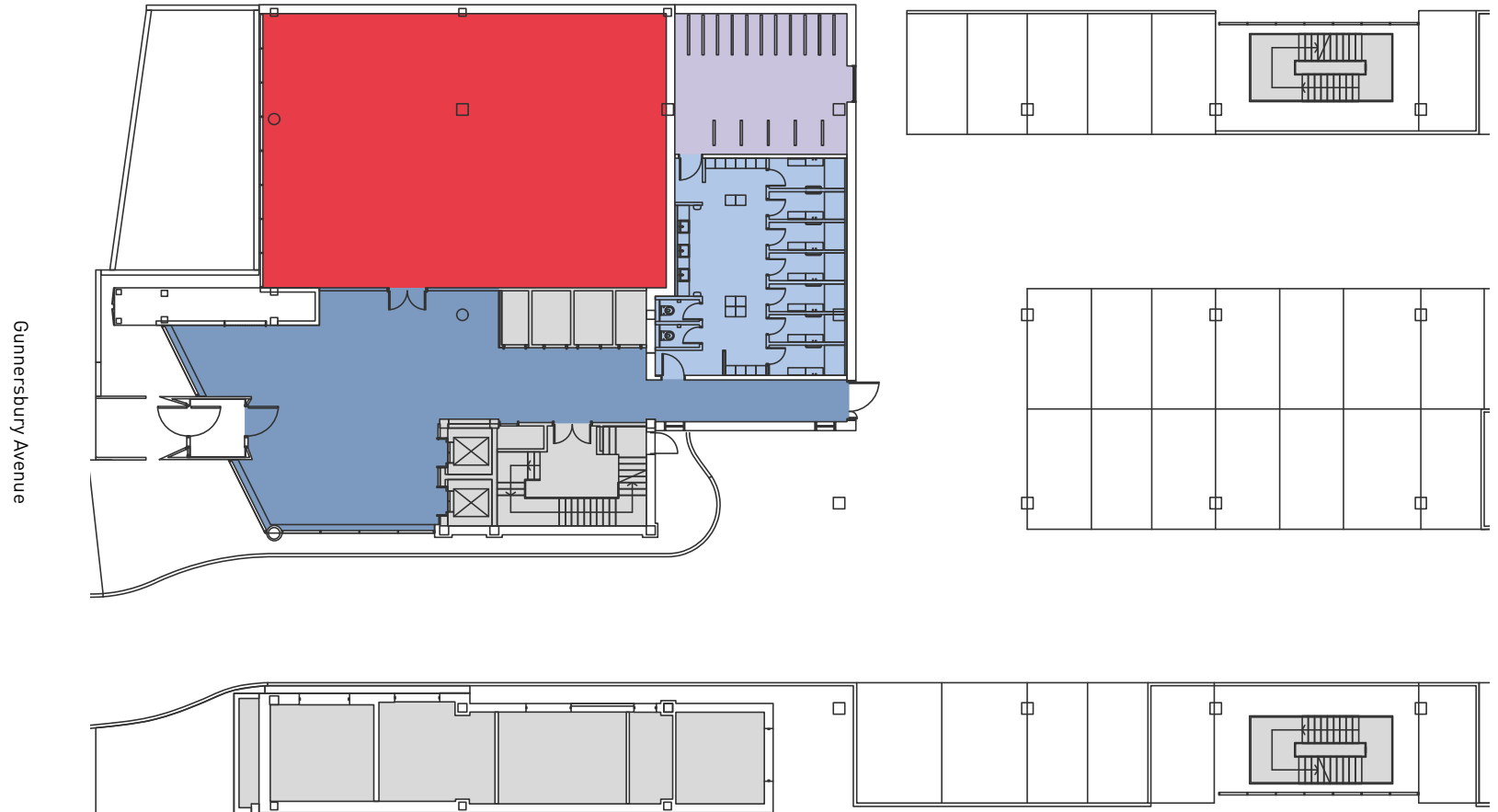


GROUND FLOOR
1,830 SQ FT / 170 SQ M



- Office
- Reception
- Showers / Changing Rooms
- Bike Store
- Atrium
- Terrace
- Core

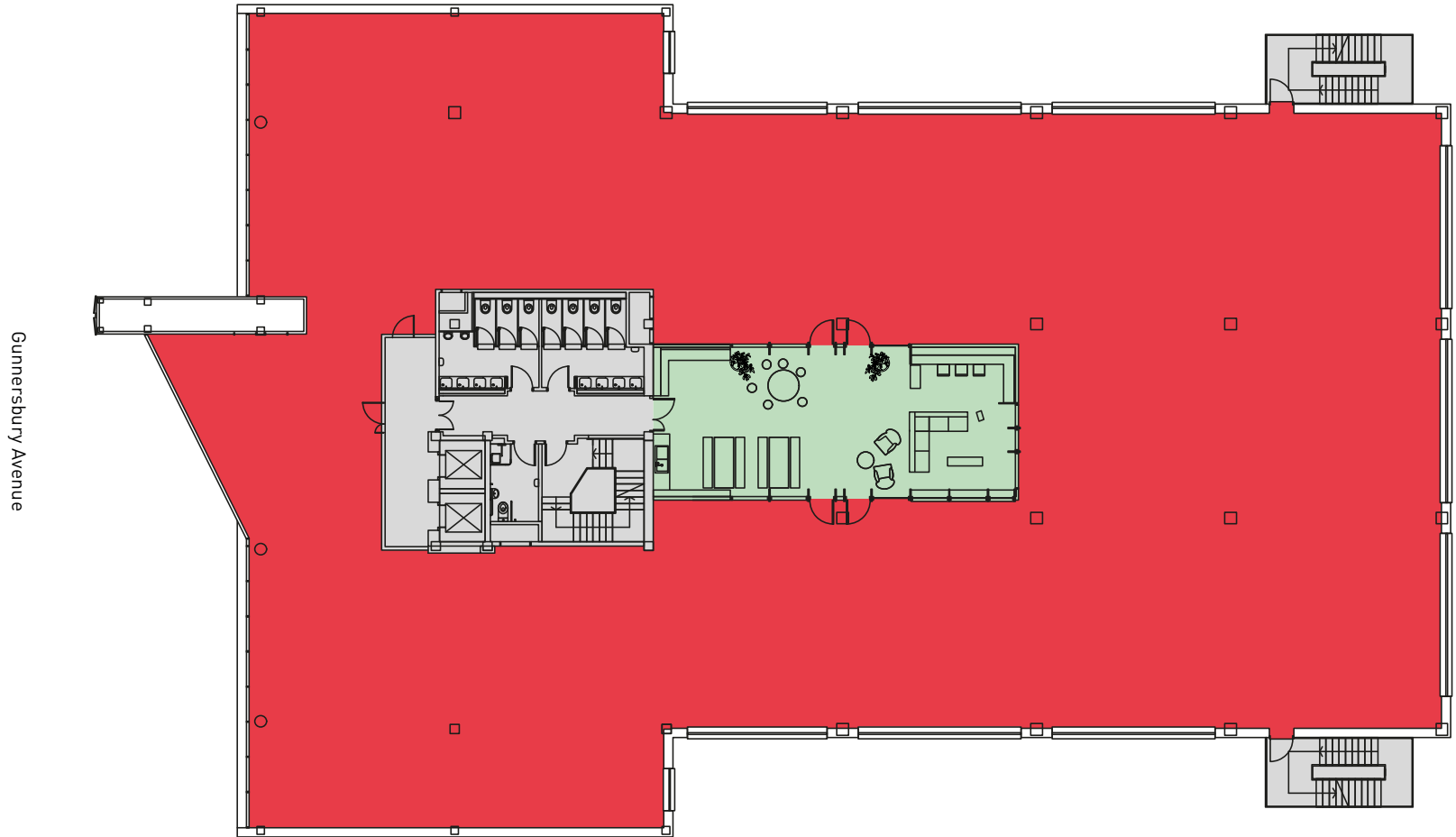
For indicative purposes only, not to scale.

272 Gunnersbury Ave
Chiswick W4 5QB

FIRST FLOOR

11,248 SQ FT / 1,045 SQ M

AVAILABLE TO SPLIT INTO FOUR SUITES FROM 2,500 SQ FT



● Office ● Reception ● Showers / Changing Rooms ● Bike Store ● Atrium ● Terrace ● Core

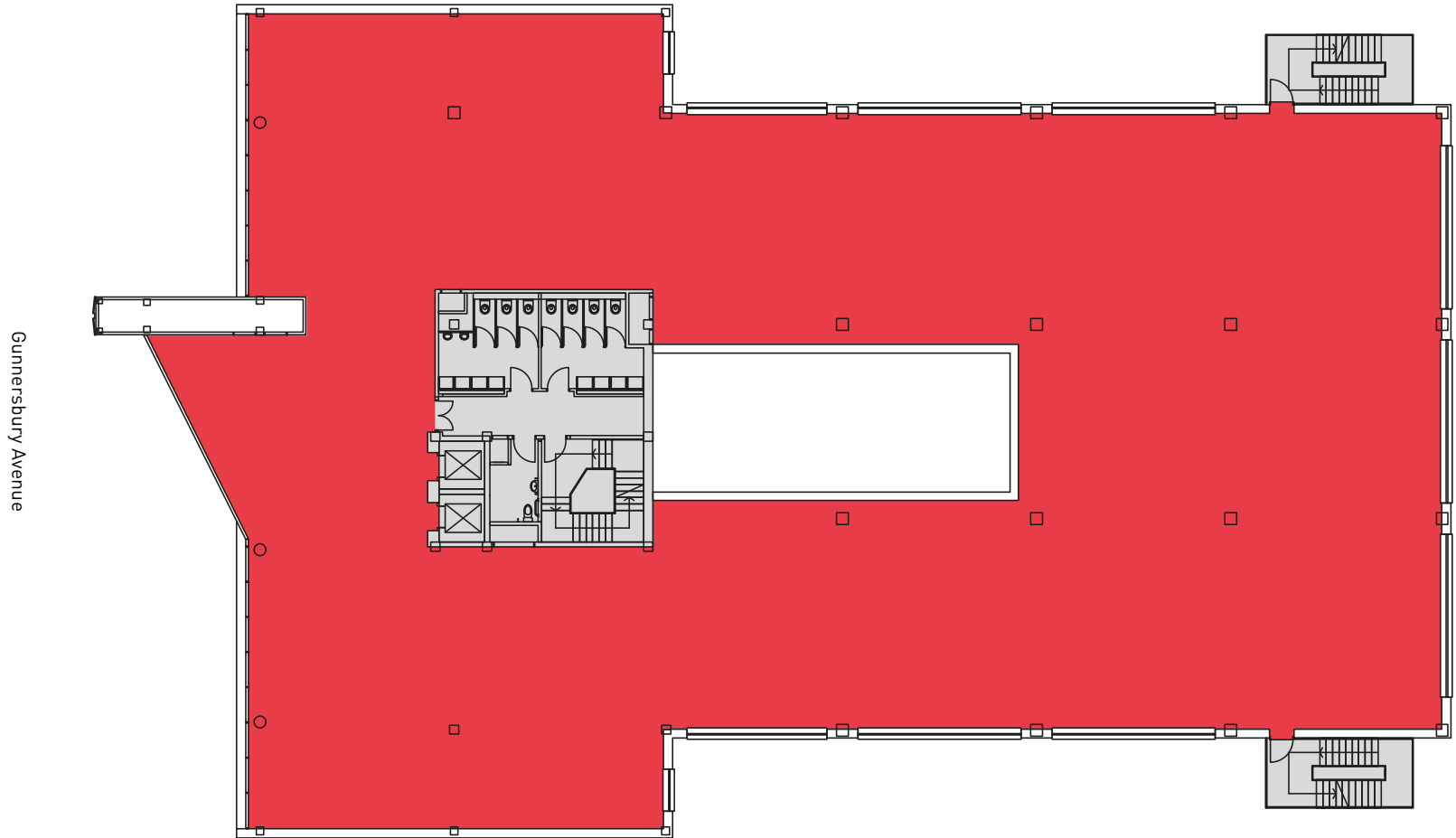
For indicative purposes only, not to scale.

272

SECOND FLOOR

11,464 SQ FT / 1,065 SQ M

AVAILABLE TO SPLIT INTO TWO SUITES OF 5,436 SQ FT AND 5,834 SQ FT

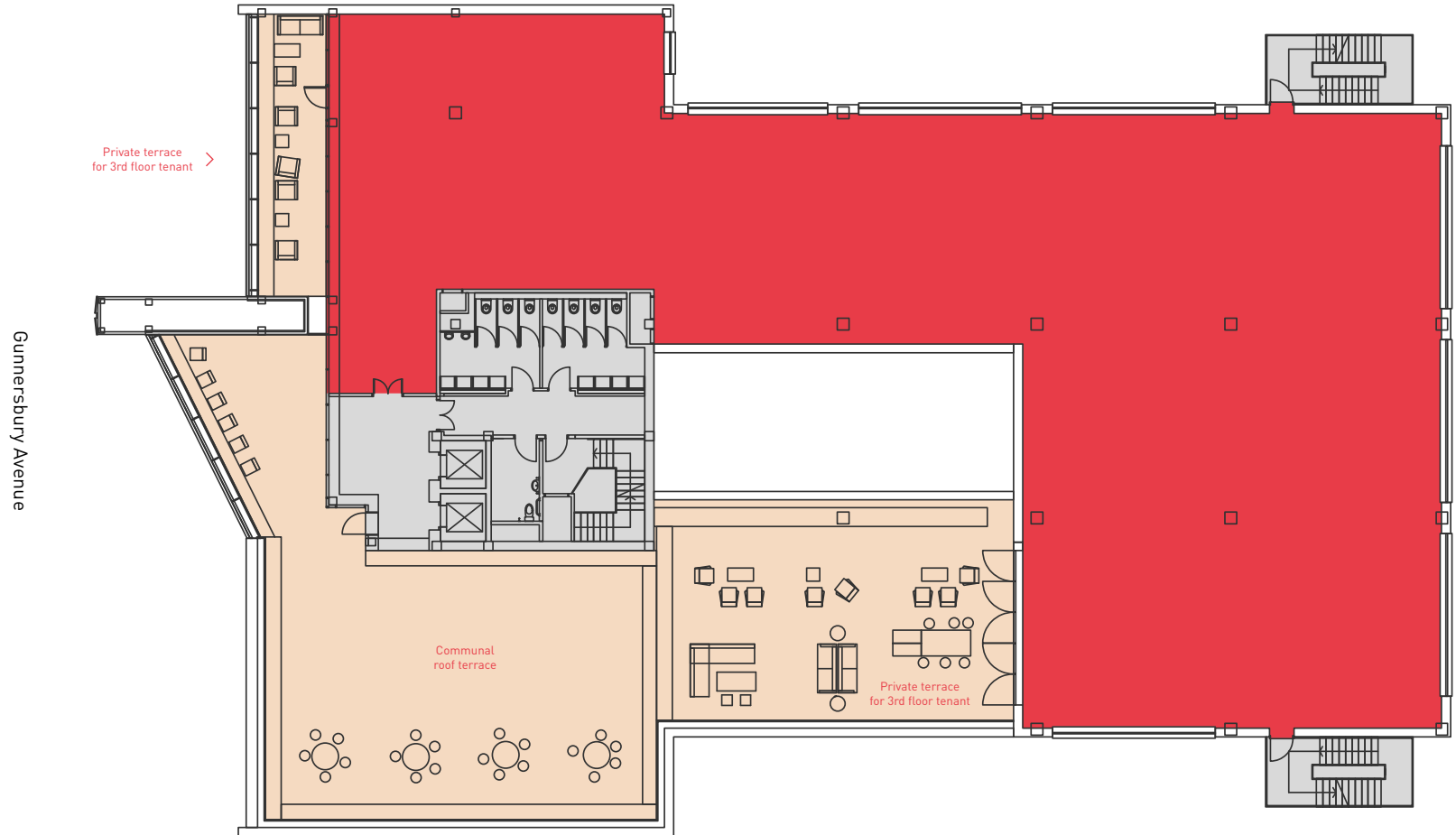


● Office ● Reception ● Showers / Changing Rooms ● Bike Store ● Atrium ● Terrace ● Core

For indicative purposes only, not to scale.

THIRD FLOOR

7,298 SQ FT / 678 SQ M



● Office ● Reception ● Showers / Changing Rooms ● Bike Store ● Atrium ● Terrace ● Core

For indicative purposes only, not to scale.